

## TERMINA

TR 611 top2

TR 622 top2

611 0 102

622 0 102

**GB** **Assembly and  
operating instructions**

Time switch

1

**E** **Instrucciones de montaje  
y de uso**

Interruptor horario

15

**P** **Manual de instruções  
e de montagem**

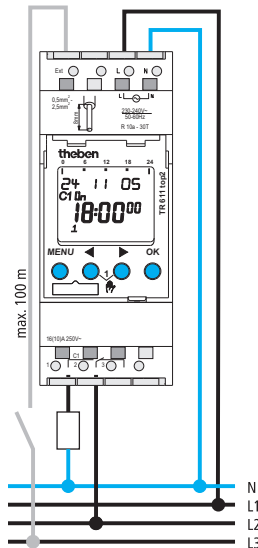
Temporizador

29

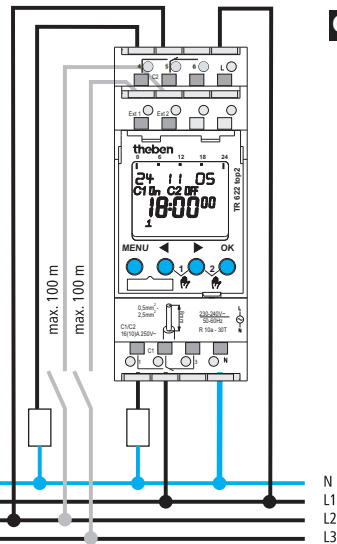
**D** **Montage- und  
Bedienungsanleitung**

Schaltuhr

43



**TERMINA TR 611 top2**



**TERMINA TR 622 top2**



Current connection required for smooth zero-crossing switch operation  
(see connection diagram)!

# Contents

Basic advice	3
Screen display and keys/Operating principle	4
Menu overview	5
Connection/assembly	6
Initial start-up	7
RESET	10
Menu item <b>PROGRAM</b>	
Reprogram switching time	8
Change/delete switching time (applies also for pulse and cycle)	9
Pulse programming	10
Cycle programming	11
Menu item <b>MANUAL</b>	
Manual and permanent switching	12
Menu item <b>OPTIONS</b>	
PIN code	12
External input	13
Memory card OBELISK top2	13
Technical data	14
Service address/Hotline	14

## Basic advice



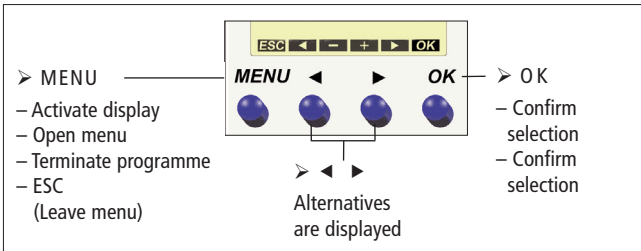
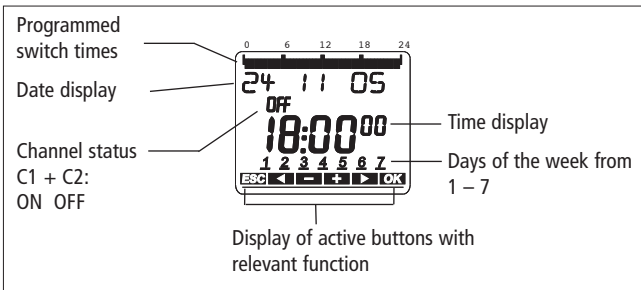
### WARNING

#### **Danger of death through electric shock or fire!**

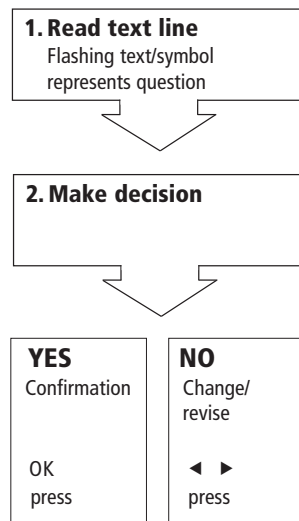
- Installation should only be carried out by professional electrician!

- The device is designed for installation on DIN top hat rails (in accordance with EN 60715)
- Corresponds to type 1 BSTU in accordance with IEC/EN 60730-2-7
- Power reserve (10 years) is reduced with memory card inserted (in battery mode)
- **Designated use:**  
The timer is used for lighting, air-conditioning, flushing etc. .
- For use only in closed, dry rooms  
Do not use on safety devices, e.g. escape route doors, fire safety equipment etc.
- **Disposal**  
Dispose of equipment in an environmentally-friendly manner

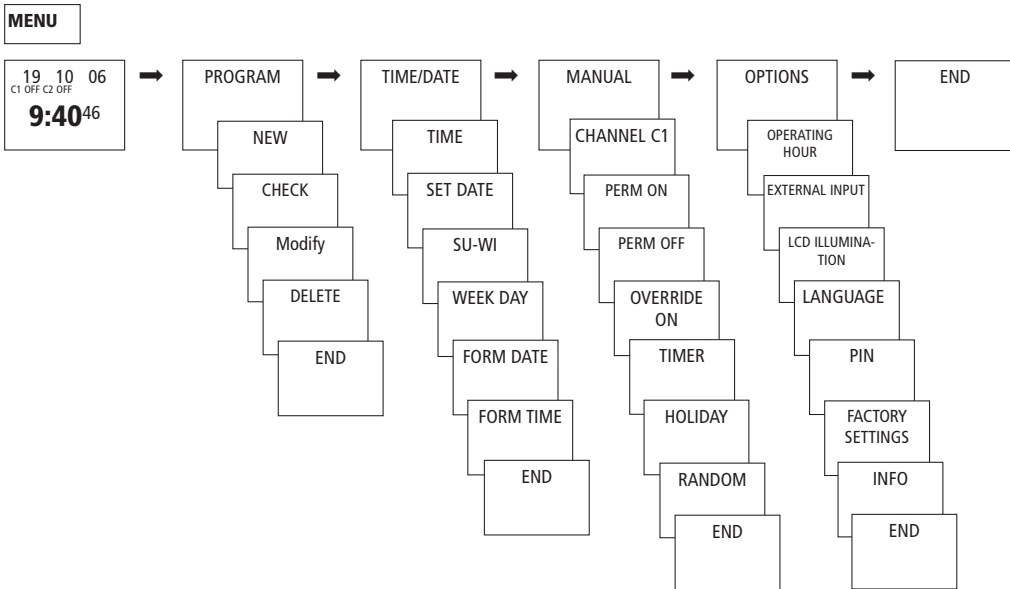
# Screen display and keys



# Operating principle



# Menu overview



# Connection/installation



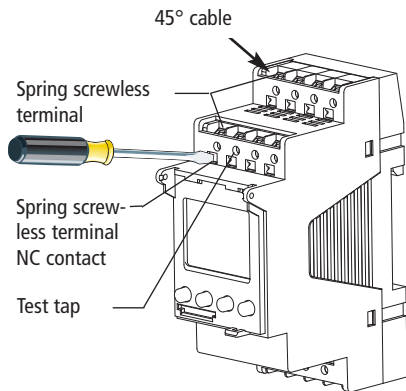
## WARNING

### Warning, danger of death through electric shock!

- Must be installed by professional electrician!
- Disconnect power source.
- Cover or shield any adjacent live components.
- Ensure device cannot be switched on!
- Check power supply is disconnected!
- Earth and bypass!

## Connect cable

- Strip cable by 8 mm (max. 9).
- Insert cable at 45° in the open terminal (2 cables per terminal is possible).
- Only for flexible wiring: Press screwdriver downwards to open spring screwless terminal.

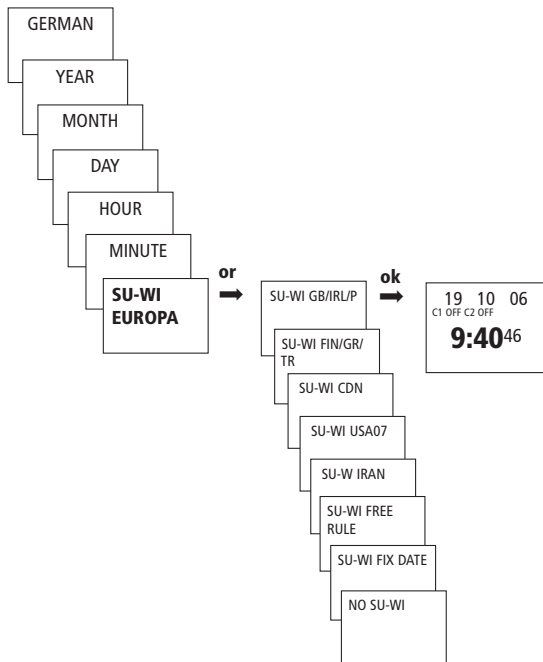


# Initial start-up

(see fig.)

## Set date, time and summer/winter time rule

- Press desired button and follow on-screen instructions.

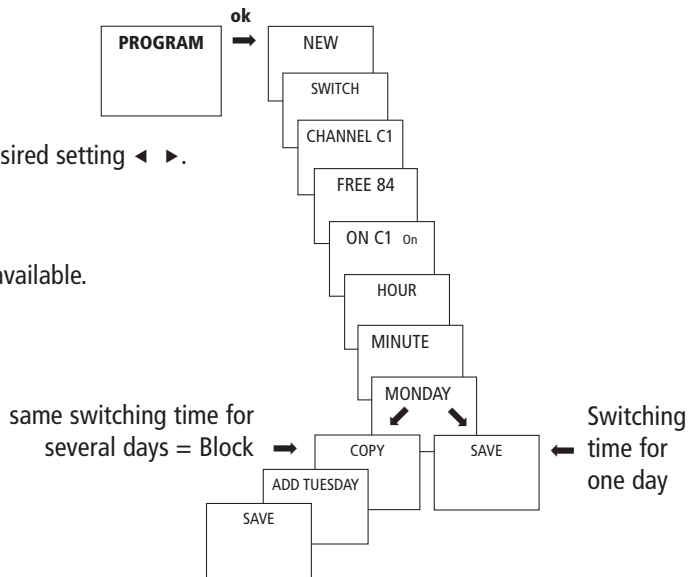


# Reprogram switching time

(see fig.)

- Press **MENU**.
- Confirm with **OK** or select desired setting ◀ ▶.
- Reconfirm with **OK**.

You have 84 memory locations available.

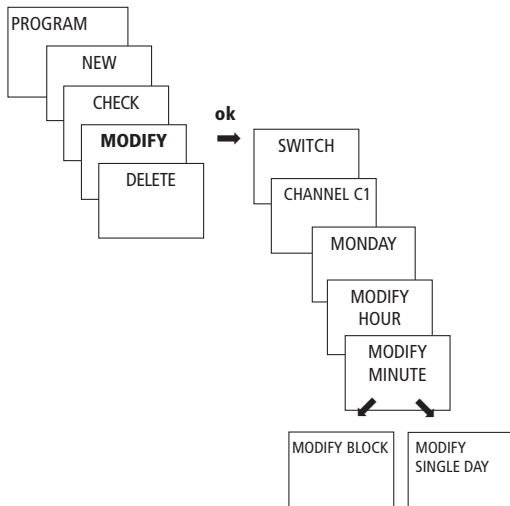




## Change/delete switching time (applies also for pulse and cycle) (see fig.)

- Press **MENU**.
- Confirm with **OK** or select desired setting ◀ ▶.
- Reconfirm with **OK**.

You can either change or delete a block, i.e. a switching time copied for several days (e.g. Mon-Fri) or a single switching time.



# Pulse programming

(see fig.)

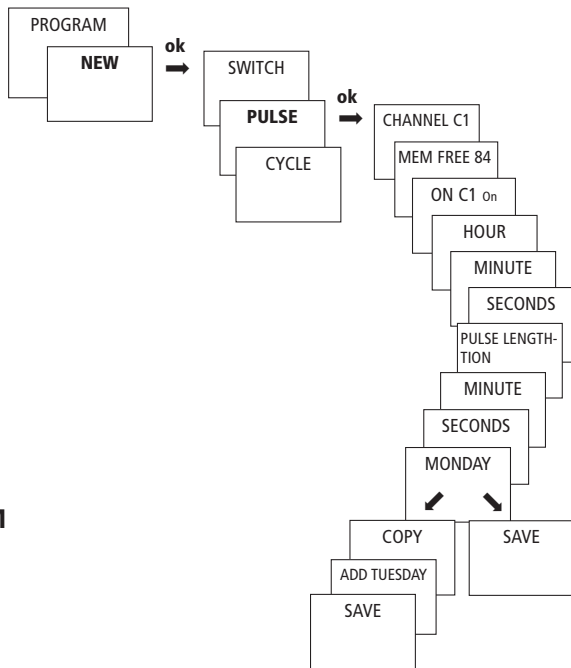
(for pause signals, air-conditioning, flushing etc.)

- Press **MENU**.
- Confirm with **OK** or select desired setting ◀ ▶.

## RESET

- Press the 4 buttons simultaneously.

You can choose between **KEEP PROGRAM** and **DELETE PROGRAM**.

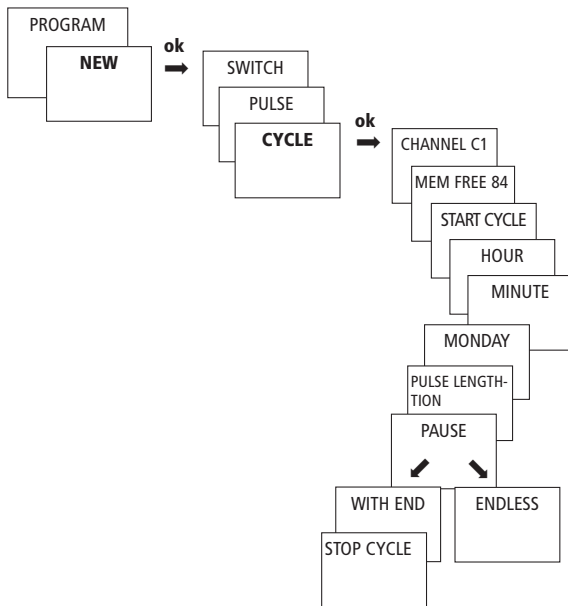


## Cycle programming

(see fig.)

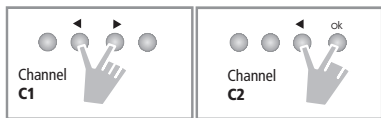
(with cyclical time functions,  
e. g. water treatment etc.)

- Press **MENU**.
- Confirm with **OK** or select the desired setting with ◀ ▶.



## Manual and permanent switching

Manual and permanent switching can be selected by using menu option **MANUAL** or (in the automatic display) via a combination of buttons (see fig.) .



### Activate manual switching

➤ Quickly press both buttons simultaneously.

### Activate permanent switching

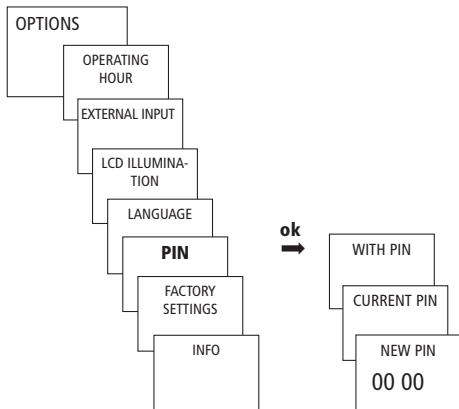
➤ Press both buttons simultaneously for 2 sec.

### Cancelling manual/permanent switching

➤ Press both buttons simultaneously.

## PIN code

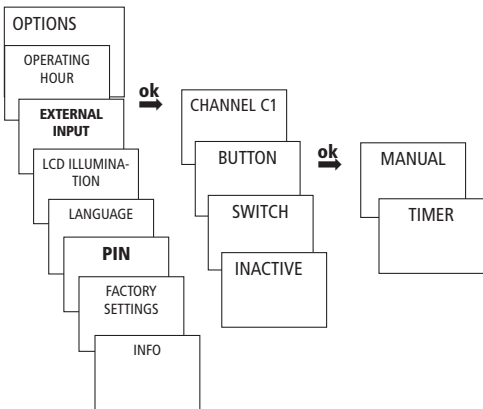
The **PIN code** is set in the menu under **OPTIONS** (see fig.). If you have forgotten the PIN call the Theben Hotline.



## External input

The **EXTERNAL INPUT** can be set using **OPTIONS** menu entry (see fig.).

- Use switch without glow lamp path.

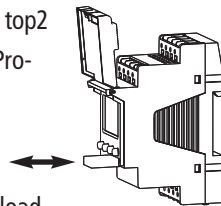


## Memory card OBELISK top2

GB

### Use memory card

- Insert memory card in the timer.
- Request savedswitch timings, read to/from the timer or start Obelisk program.
- Memory card OBELISK top2 (No. 907 0 404) after Programming etc. remove and store in cover.



Avoid mechanical overload or contamination caused by other storage/transport.

## Technical data

- Nominal voltage: 230–240 V~, +10 %/-15 %
- Frequency: 50-60 Hz
- Power consumption: max. 6 VA
- Switching output: phase-independent  
(zero-crossover switching),
- TR 611 top2: suitable for switching SELV  
(Safe Extra-Low Voltage)
- Contact: two way switch
- Contact material: AgSnO<sub>2</sub>
- Switching capacity max.: 16 A, 250 V~, cos  $\varphi = 1$ ;  
10 A, 250 V~, cos  $\varphi = 0.6$
- Switching capacity min.: 10 mA/230 V AC  
100 mA/24 V AC/DC
- Incandescent lamp load: 2600 W
- Halogen lamp load: 2600 W
- Fluorescent lamp load: uncorrected:  
1000 VA series corrected  
730 VA (80  $\mu$ F) parallel corrected
- Compact fluorescent lamps: 22 x 7 W, 18 x 11 W  
16 x 16 W, 20 x 14 W, 23 x 15 W,
- Permissible ambient temperature: -30 °C ... +55 °C

- Protection class: II in accordance with  
EN 60730-1 for designated installation
- Protection rating: IP 20 in accordance with  
EN 60529
- Pollution level: 2
- Power consumption: 10 years at 20 °C

## Service address/Hotline

### Service address

Theben AG  
Hohenbergstr. 32  
72401 Haigerloch  
GERMANY  
Phone +49 (0) 74 74/6 92-0  
Fax: +49 (0) 74 74/6 92-150

### Hotline

Phone+49 (0) 74 74/6 92-369  
Fax: +49 (0) 74 74/6 92-207  
hotline@theben.de

**Addresses, telephone numbers etc.**  
**www.theben.de**